



## System 75 - Antistatic (AS)

### Extraction arms

<a href="#">Table mounting</a> .....	75 AS 2
<a href="#">Wall and ceiling mounting</a> .....	75 AS 3

### Hoods

<a href="#">Suction pen 1-7525-6</a> .....	75 AS 4
<a href="#">Metal hood 1-7524-6</a> .....	75 AS 5
<a href="#">Round hood 1-7535-6</a> .....	75 AS 6
<a href="#">Flat hood 1-753324-6</a> .....	75 AS 7

### Brackets

<a href="#">Table bracket 2-7510-050</a> .....	75 AS 8
<a href="#">Wall bracket 2-195-050</a> .....	75 AS 9
<a href="#">Wall bracket 2-195-10-22-6</a> .....	75 AS 9
<a href="#">Ceiling columns</a> .....	75 AS 10

### Accessories

<a href="#">Reducer 4-8075-6</a> .....	75 AS 11
<a href="#">Reducer 4-10075-6</a> .....	75 AS 12
<a href="#">Cover flange 4-200-200</a> .....	75 AS 13
<a href="#">Support bracket 2-75-5</a> .....	75 AS 14
<a href="#">Protective netting 5-17-6</a> .....	75 AS 15

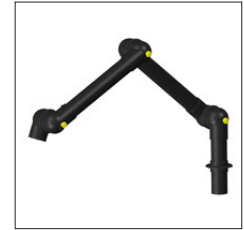


## System 75 - Antistatic (AS)

All components RoHS-compatible.

### Design:

- Extraction arm for mounting on table
- Working range 550 - 1290 mm
- Recommended airflow 80 to 180 m<sup>3</sup>/h
- Diameter of tube Ø75 mm
- Tubes and joints made of conductive, shatterproof, chemical resistant polypropylene (PP)
- All O-rings conductive and maintenance free
- Integrated valve. When in an open position out of the flow path to maintain the maximum amount of flow
- All threaded stays, springs and thumbscrews made of acid-proof stainless steel (AISI 316L)
- All rivets made of conductive chemical resistant polypropylene (PP) for increased durability in aggressive environments
- All hoods can be provided with a protective netting (accessory) to reduce the risk of extracting foreign objects
- Approved for ESD-areas according to IEC 61340-5-1:2016
- Approved for ESD/Ex-areas according to EN 80079-36:2016 and EN 80079-37:2016 according to ATEX directive 2014/34/EU labelled Ex II 1 GD
- The extraction arms are equipped with an earth wire for EX-areas.  
For mounting in ESD-areas, an earth wire with a 1 MΩ resistance is enclosed
- Dismantling of the arm without tools for cleaning

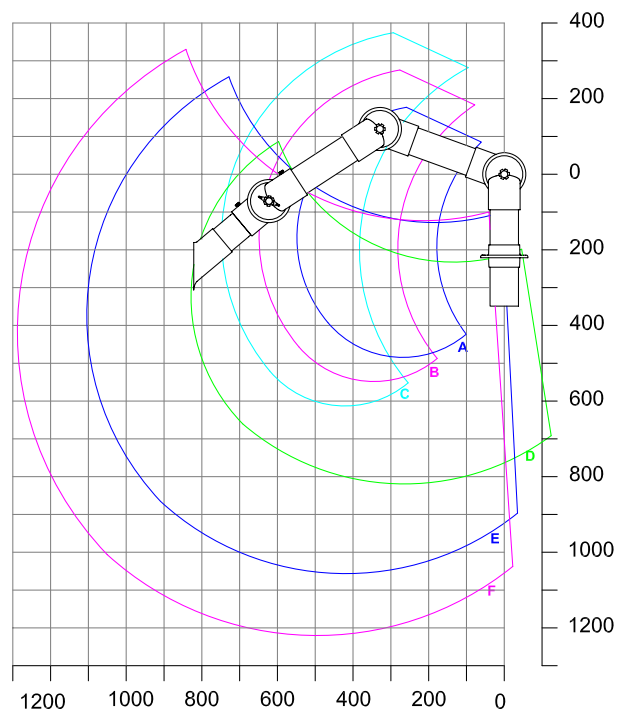


Links: [Pressure drop chart](#), [Mounting](#), [User's manual](#), [Capture efficiency](#), [Test reports](#), [Material compatibility](#)

## Working area

We do not recommend a stationary working position in the upper or lower working area.

All units in mm



A: Model 75-35-1-6  
B: Model 75-45-1-6  
C: Model 75-55-1-6  
D: Model 75-3535-1-6  
E: Model 75-5545-1-6  
F: Model 75-6555-1-6



## System 75 - Antistatic (AS)

All components RoHS-compatible.

### Design:

- Extraction arm for mounting on wall/ceiling
- Working range from 550 to 1990 mm (depending on model)
- Recommended airflow 80 to 180 m<sup>3</sup>/h
- Diameter of tube Ø75 mm
- Tubes and joints made of conductive, shatterproof, chemical resistant polypropylene (PP)
- All O-rings conductive and maintenance free
- Integrated valve. When in an open position out of the flow path to maintain the maximum amount of flow
- All threaded stays, springs and thumbscrews made of acid-proof stainless steel (AISI 316L)
- All rivets made of conductive chemical resistant polypropylene (PP) for increased durability in aggressive environments
- All hoods can be provided with a protective netting (accessory) to reduce the risk of extracting foreign objects
- Approved for ESD-areas according to IEC 61340-5-1:2016
- Approved for ESD/Ex-areas according to EN 80079-36:2016 and EN 80079-37:2016 according to ATEX directive 2014/34/EU labelled Ex II 1 GD
- The extraction arms are equipped with an earth wire for EX-areas.  
For mounting in ESD-areas, an earth wire with a 1 MΩ resistance is enclosed
- Dismantling of the arm without tools for cleaning



Links: [Pressure drop chart](#), [Mounting EX without gas spring](#), [Mounting EX with gas springs](#),  
[Mounting ESD without gas spring](#), [Capture efficiency](#), [Mounting ESD with gas springs](#), [User's manual](#),  
[Test reports](#), [Material compatibility](#)

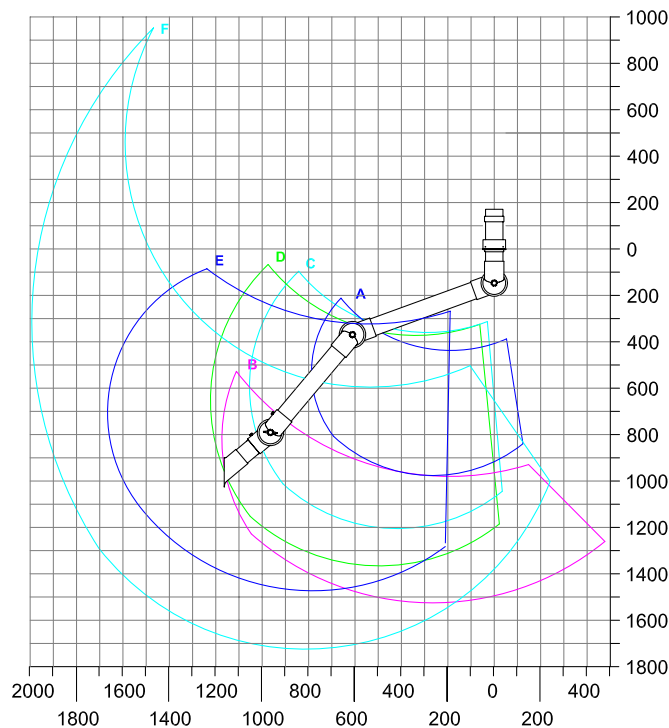
## Working area

We do not recommend a stationary working position in the upper or lower working area.

All units in mm

\* With 1 gas spring

\*\* With 2 gas springs



A: Model 75-3535-3-6  
 B: Model 75-3590-3-6  
 C: Model 75-5545-3-6  
 D: Model 75-6555-3-6  
 E: Model 75-9065-3-22-6\*  
 F: Model 75-9090-3-22-6\*\*

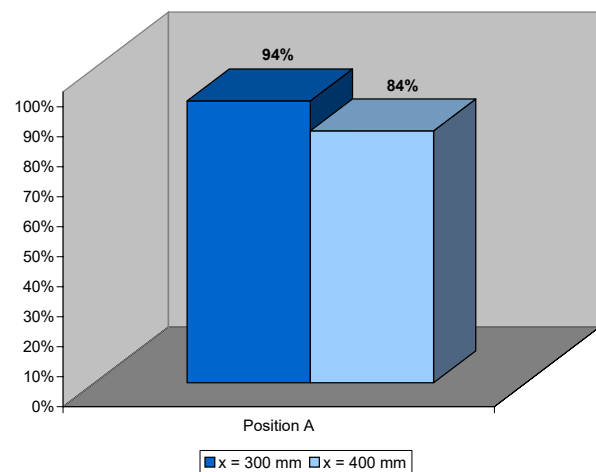
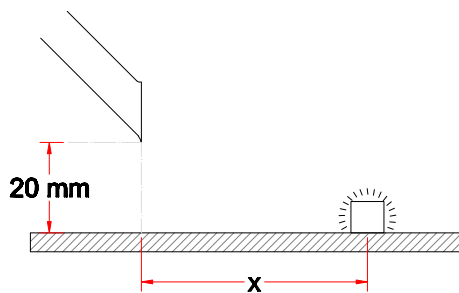


## System 75 - Antistatic (AS)

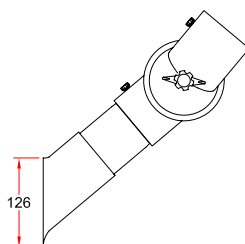
- Suction pen recommended for concentrated sources of pollution
- High efficiency as the suction pen gets close to the source without obstructing the work process
- Made of conductive, chemical resistant polypropylene (PP)
- With funnel in order to increase the capture efficiency
- Length: 250 mm



## Capture efficiency



## Drawing





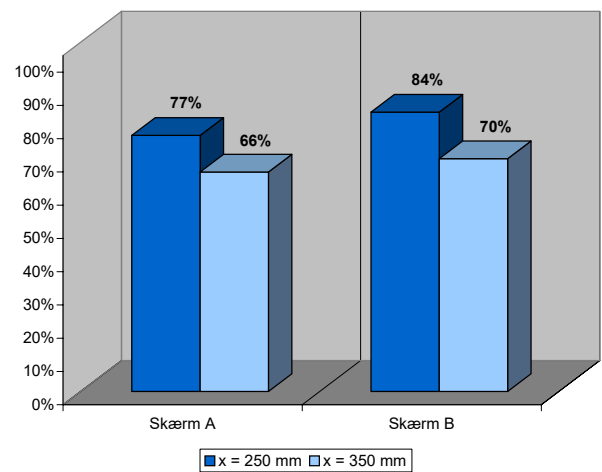
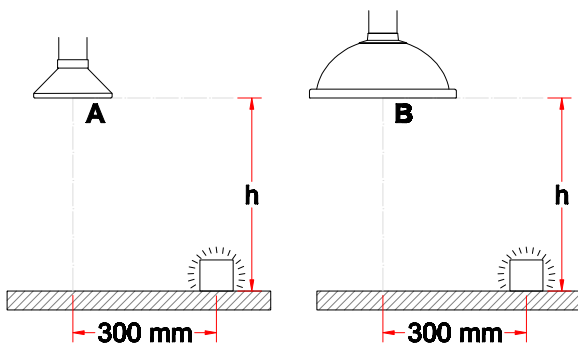
## System 75 - Antistatic (AS)

- Metal hood recommended when extracting hot gases, fumes, light dust concentrations etc.
- Diameter of hood:  $\varnothing 200$  mm
- Hood made of chromated (TCP) Aluminium to assure permanent conductivity
- Connecting tube and flange made of conductive, chemical resistant polypropylene (PP)

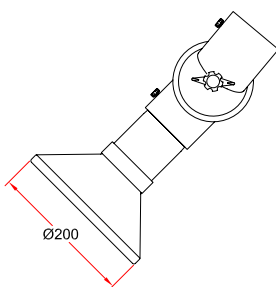


## Capture efficiency

The relatively low efficiency indicates, that the illustrated position is not optimal for this hood. For system 100 other measurements have been made for a similar round hood - see article no. [1-10024](#).



## Drawing





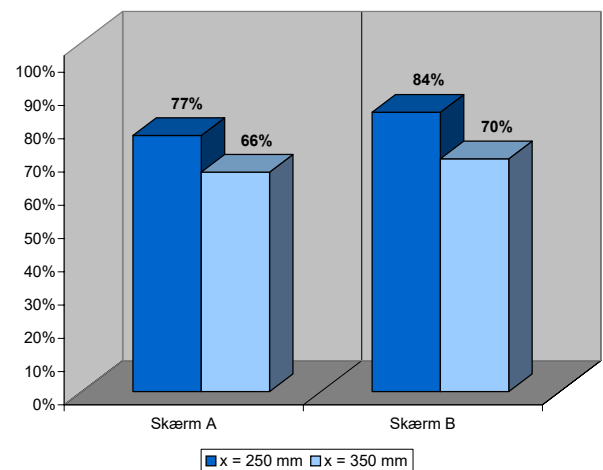
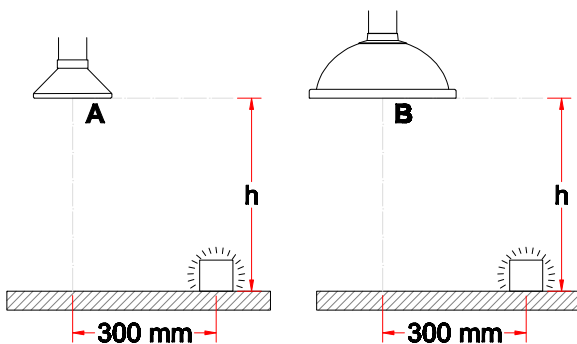
## System 75 - Antistatic (AS)

- Round hood recommended for light fumes, gases and over small open vessels
- Diameter of hood:  $\varnothing 385$  mm
- Increased stability when moving the hood due to reinforced rim of the hood
- Increased efficiency at an angled position
- Hood, connection tube and flange made of conductive, chemical resistant polypropylene (PP)

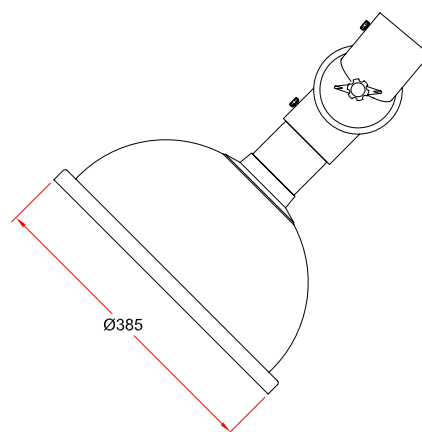


## Capture efficiency

The relatively low efficiency indicates, that the illustrated position is not optimal for this hood. For system 100 other measurements have been made for a similar round hood - see article no. [1-10050](#).



## Drawing



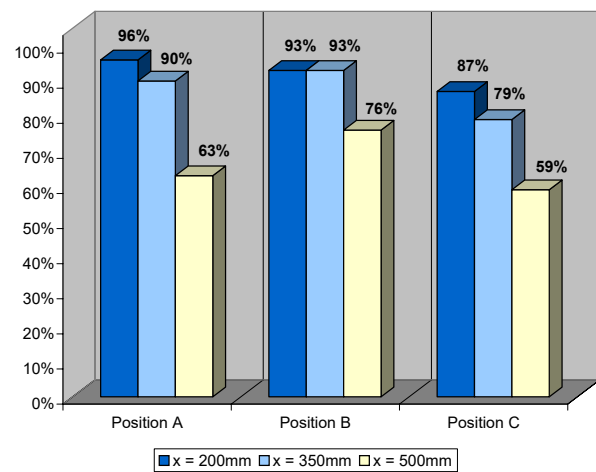
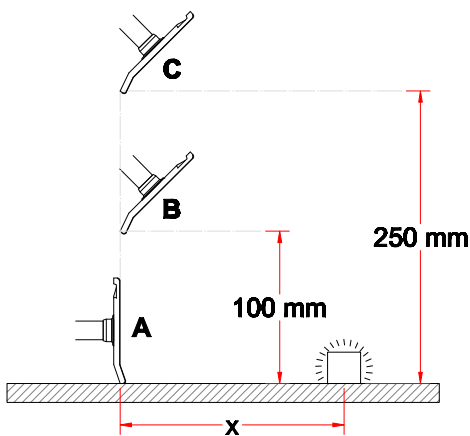


## System 75 - Antistatic (AS)

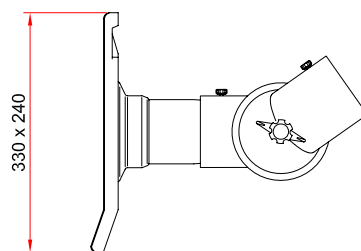
- Flat hood recommended when extracting heavy gases and fumes
- Dimension of the hood: 330x240 mm
- Increased efficiency when placed vertically on a surface
- Hood, connection tube and flange made of conductive, chemical resistant polypropylene (PP)



## Capture efficiency



## Drawing



# Table bracket 2-7510-050

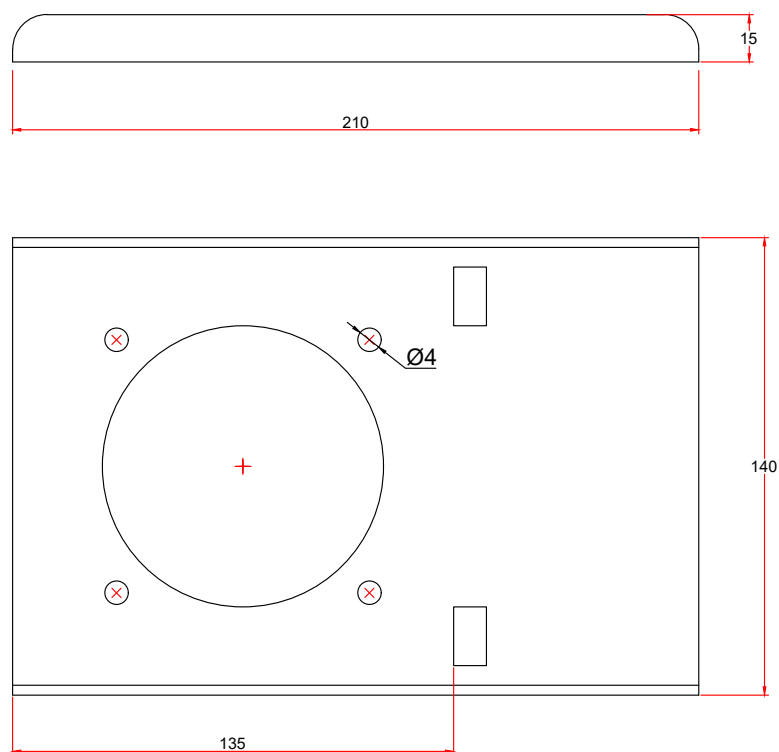


## System 75 - Antistatic (AS)

- Table bracket to mount extraction arms for table mounting at the edge of the table
- Easily removable without tools for mobile installations
- Made of steel with a polyester powder-coating on all surfaces
- Colour: black



## Drawing





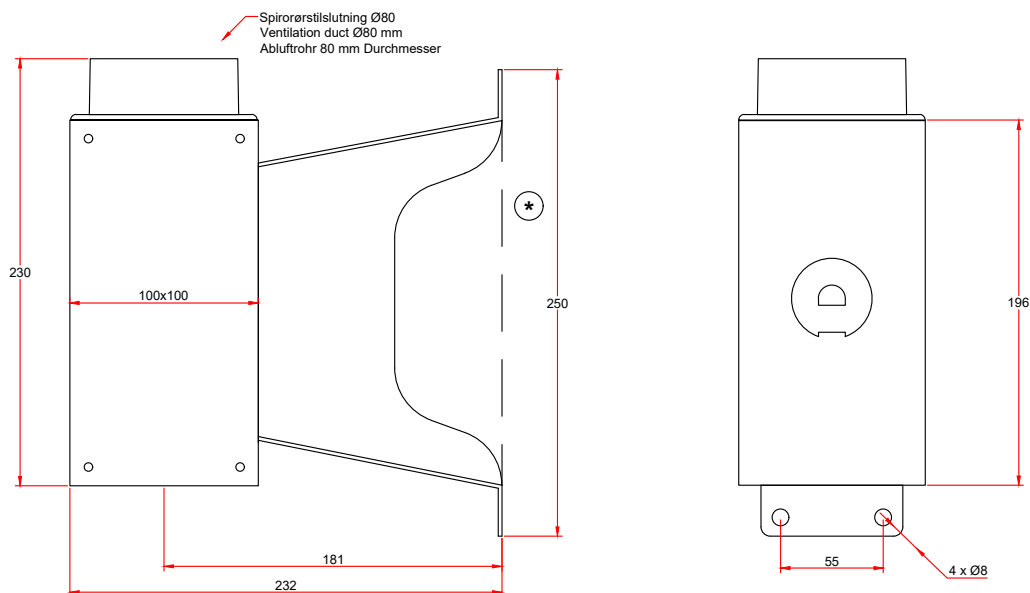


## System 75 - Antistatic (AS)

- Bracket to mount extraction arms for wall mounting to the wall
- Connection to ventilation duct:
  - Direct connection with a duct Ø80 mm
  - Connection with reducer 4-10075 to Ø100 duct
  - Connection with our Ø75 aluminium pipe in the length needed, when a stylish installation is required
- Steel with a black polyester powder coating on all surfaces:
  - 2-195-050 (open sides)
  - 2-195-10-050 (closed sides)
- Acid-proof stainless steel (AISI 316L), stained with black top:
  - 2-195-10-22-6 (closed sides)



## Drawing



\*) Closed sides for areas with special requirements of cleaning.

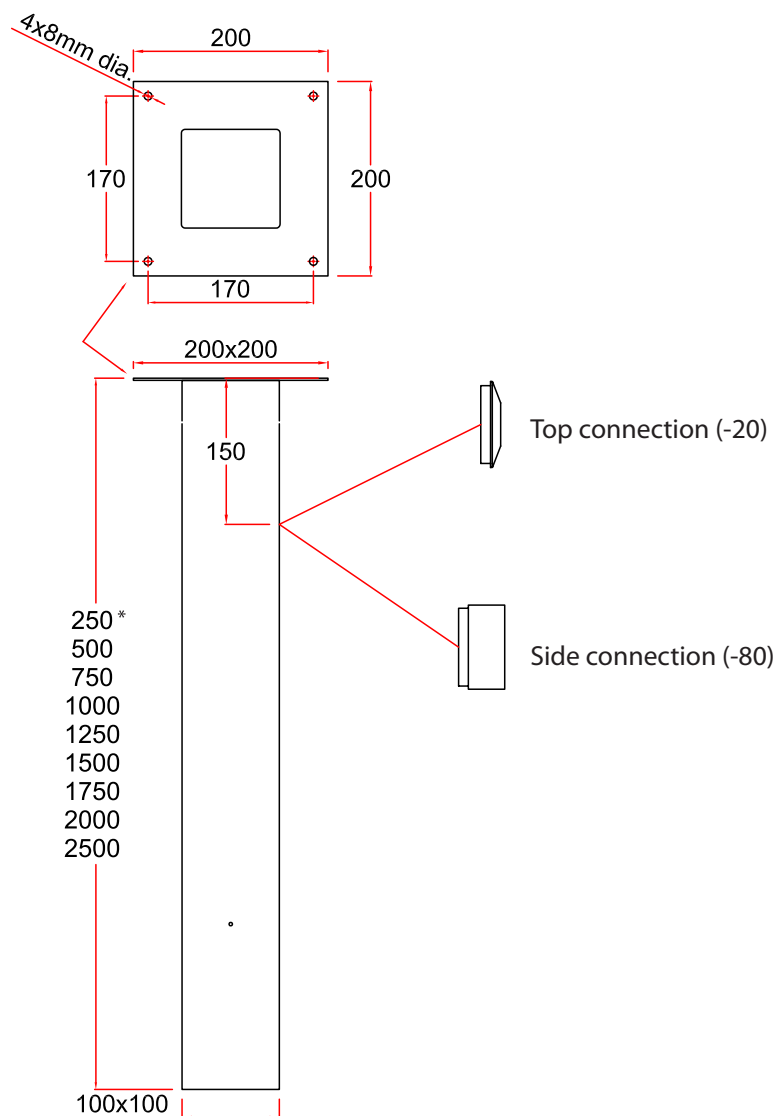


## System 75 - Antistatic (AS)

- Ceiling columns to mount extraction arms for ceiling mounting to the ceiling
- Strong construction made of steel
- Increased durability due to polyester powder-coating on all surfaces
- Available with top connection (-20) or side connection Ø80 mm (-80)
- Colours available: white (-5) or black (-050)
- Dimension: 100x100 mm
- Lengths: 250 - 2500 mm



## Drawing



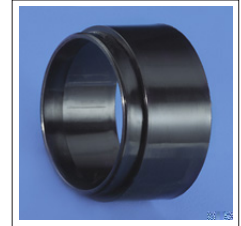
\*) Only for socket pipe with hole (side connection).  
Hole to be made by installer.

250\*  
500  
750  
1000  
1250  
1500  
1750  
2000  
2500

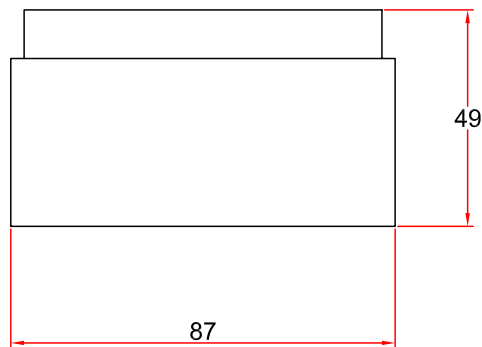


## System 75 - Antistatic (AS)

- Reducer to connect extraction arm and ventilating duct
- Reduces from Ø80 - Ø75
- Made of conductive polypropylene (PP)
- Colour: Black



## Drawing



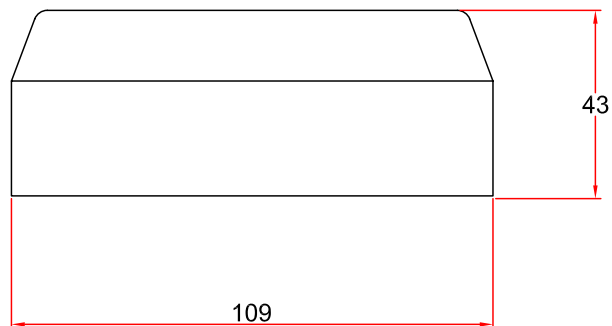


## System 75 - Antistatic (AS)

- Reducer to connect extraction arm and ventilating duct
- Can be used to connect wall bracket to ventilating duct Ø100 mm
- Reduces from Ø100 - Ø75
- Made of conductive polypropylene (PP)
- Colour: Black



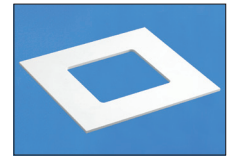
## Drawing





## System 75 - Antistatic (AS)

- Cover flange to mount on false ceiling. Hides the carrying of the ceiling column through the false ceiling
- Fasten with glue or small screws
- Dimensions: 200 x 200 mm
- Material: polystyrene
- Colour: white



## Drawing

For this product there is no drawing

# Support bracket 2-75-5

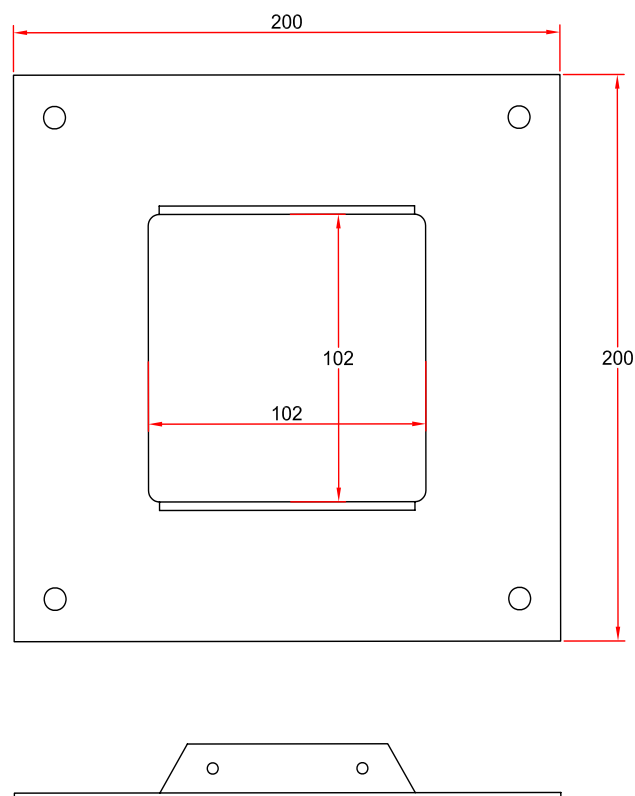


## System 75 - Antistatic (AS)

- For extra support of long ceiling columns when mounted to ceiling racks or with wires to the deck
- Made of steel with a polyester powder-coating on all surfaces
- Colour: white
- Dimensions: 200 x 200 mm



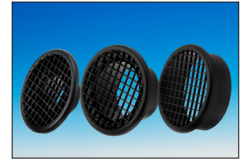
## Drawing





## System 75 - Antistatic (AS)

- Protective netting to be placed in the hood
- Protects against extraction of foreign objects
- Conductive polypropylene (PP)
- Colour: Black



## Drawing

