



System 75 - Aluminium (AL)

All components RoHS-compatible.

Design:

- Extraction arm for mounting on wall or ceiling
- Working range 795 - 1990 mm
- Recommended airflow 80 to 180 m³/h
- Diameter of tube Ø75 mm
- Tubes made of anodized Aluminium - surface 10 µ
- Joints made of shatterproof, chemical resistant polypropylene (PP)
- Colours of joints: white (-5) and red (-4)
- All O-rings maintenance free
- Integrated valve. When in an open position out of the flow path to maintain the maximum amount of flow
- All threaded stays, springs and thumbscrews made of acid-proof stainless steel (AISI 316L)
- Acid-proof POP® rivets for increased durability in aggressive environments
- All hoods can be provided with a protective netting (accessory) to reduce the risk of extracting foreign objects
- Dismantling of the arm without tools for cleaning



Links: [Pressure drop chart](#), [Mounting without gas spring](#), [Mounting with gas springs](#)
[User's manual](#), [Capture efficiency](#).

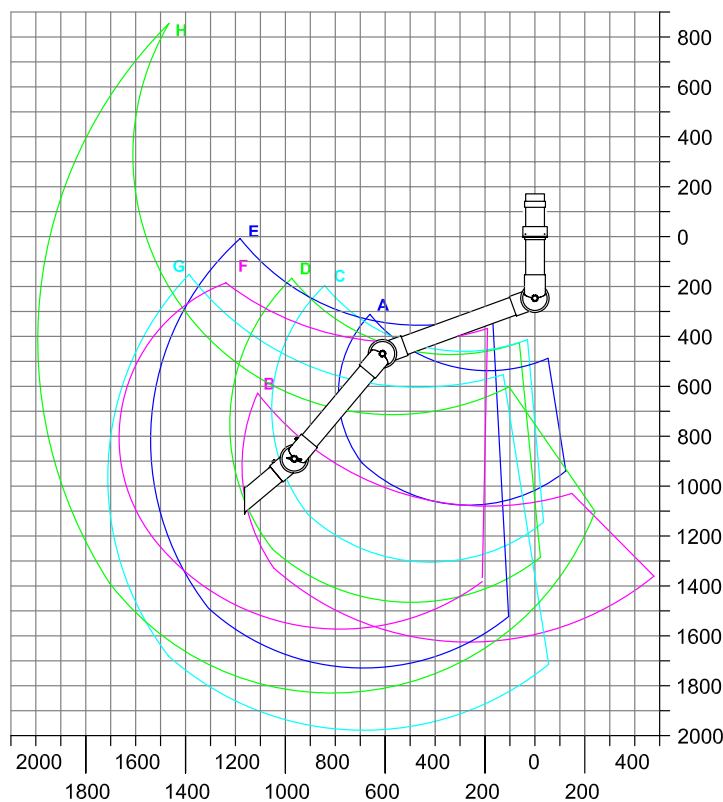
Working area

We do not recommend a stationary working position in the upper or lower working area.

All units in mm

* With 1 gas spring

** With 2 gas springs



- A: Model 75-3535-3-4 /-5
- B: Model 75-3590-3-4 /-5
- C: Model 75-5545-3-4 /-5
- D: Model 75-6555-3-4 /-5
- E: Model 75-9065-3-4 /-5
- F: Model 75-9065-3-22-4 /-5*
- G: Model 75-9090-3-4 /-5
- H: Model 75-9090-3-22-4 /-5**