



## System 75 - Chemical resistant (PP)

All components RoHS-compatible

### Design:

- Extraction arm for mounting on wall/ceiling
- Working range 795 - 1990 mm
- Recommended airflow 80 to 180 m<sup>3</sup>/h
- Diameter of tube Ø75 mm
- Tubes made of chemical resistant polypropylene (PP)
- Joints made of shatterproof, chemical resistant polypropylene (PP)
- Colour of joints: white (-5) or red (-4)
- All O-rings maintenance free
- Integrated valve. When in an open position out of the flow path to maintain the maximum amount of flow
- All threaded stays, springs and thumbscrews made of acid-proof stainless steel (AISI 316L)
- All rivets made of chemical resistant polypropylene (PP) for increased durability in aggressive environments
- All hoods can be provided with a protective netting (accessory) to reduce the risk of extracting foreign objects
- Dismantling of the arm without tools for cleaning



Links: [Pressure drop chart](#), [Mounting without gas spring](#), [Mounting with gas springs](#), [User's manual](#), [Capture efficiency](#), [Material compatibility](#)

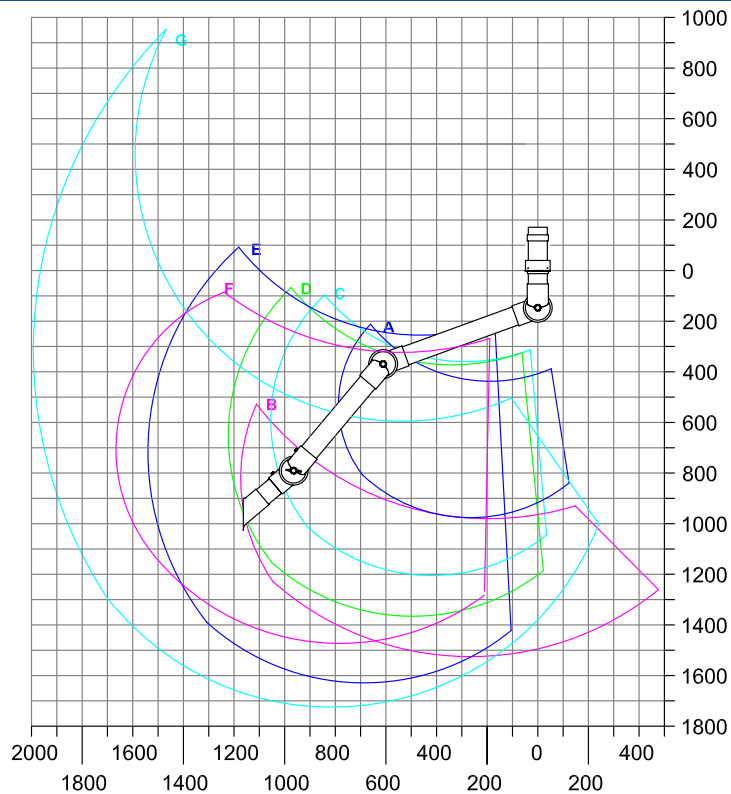
## Working area

We do not recommend a stationary working position in the upper or lower working area.

All units in mm

\* With 1 gas spring

\*\* With 2 gas springs



A: Model 75-3535-3-7-5  
 B: Model 75-3590-3-7-5  
 C: Model 75-5545-3-7-5  
 D: Model 75-6555-3-7-5  
 E: Model 75-9065-3-7-5  
 F: Model 75-9065-3-22-7-5  
 G: Model 75-9090-3-22-7-5\*\*

-7-5