

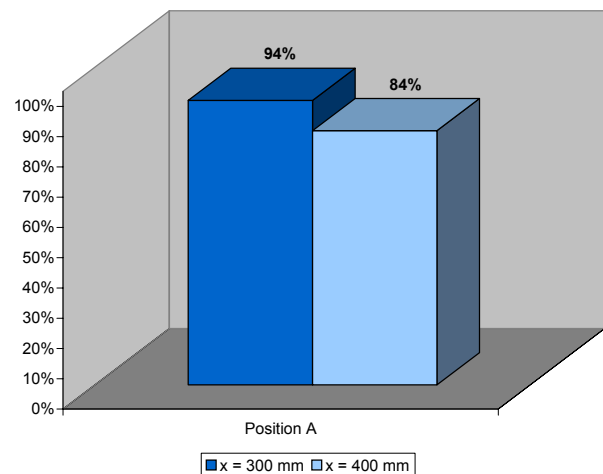
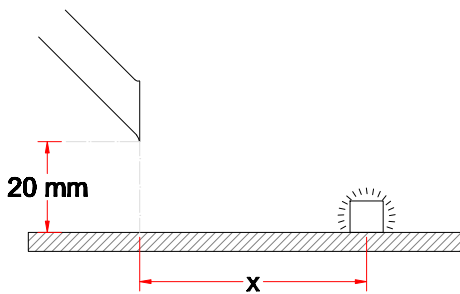


System 75 - Aluminium (AL)

- Suction pen recommended for concentrated sources of pollution
- High efficiency as the suction pen gets close to the source without obstructing the work process
- Tube made of anodized aluminium - surface 10 μ
- Funnel of the suction pen in order to increase the capture efficiency
- Length: 250 mm



Capture efficiency



Drawing

